



Follow Us On:

ecogrip tile/    



INTRODUCTION

Our EcoGrip journey towards excellence is built upon a foundation of innovation, dedication, and collaboration. Together, we have achieved remarkable milestones and overcome significant challenges. As we move forward, let us continue to embrace change, adapt to evolving market dynamics, and seize opportunities for growth. Our collective efforts drive the success of this organization, and I am confident that with our shared vision and commitment, we will continue to excel and thrive in the competitive landscape. Let us remain steadfast in our pursuit of excellence and uphold the values that define us.

•—————•

ABOUT

HOUSE OF TILEMATE SOLUTION is a well-established fast growing Indian company engaged into manufacturing of construction chemicals under the brand name "ECOGRIP". It has state of the art manufacturing facilities in Indore (Madhya Pradesh), producing 10 million kilograms of tile adhesives products, epoxy grouting with allied products per annum.

ECOGRIP has well equipped R&D laboratory for new product development and QC laboratory to ensure best quality products. Our innovative products are developed after thorough technical and market research, adhering to international quality standards. We, at ECOGRIP strive for excellence. quality and customer-satisfaction. Our ware-house is well equipped to stock adequate inventory ensuring product availability and timely delivery.



RESOURCES

Our Indore (M.P.) facility boasts cutting-edge GERMAN TECHNOLOGY and adheres to strict international quality standards. Our experienced team delivers tailored solutions to meet customer needs.



VISION & MISSION

ECOGRIP aspires to be one of the world-class market leaders in the construction chemicals industry. It is the strength, leadership and dedication of our management team that lay the foundation of our vision.



GROWTH

Envisioning continuous growth With strategic planning and ability to overcome challenges, we aim for the highest level of growth.



QUALITY

Endorsing product quality we strive to enhance confidence through perfecting product quality and product assurance standards



INNOVATION

Embracing product innovation it is our passion that encourages us to invent and rediscover new products to increase our competitive edge.

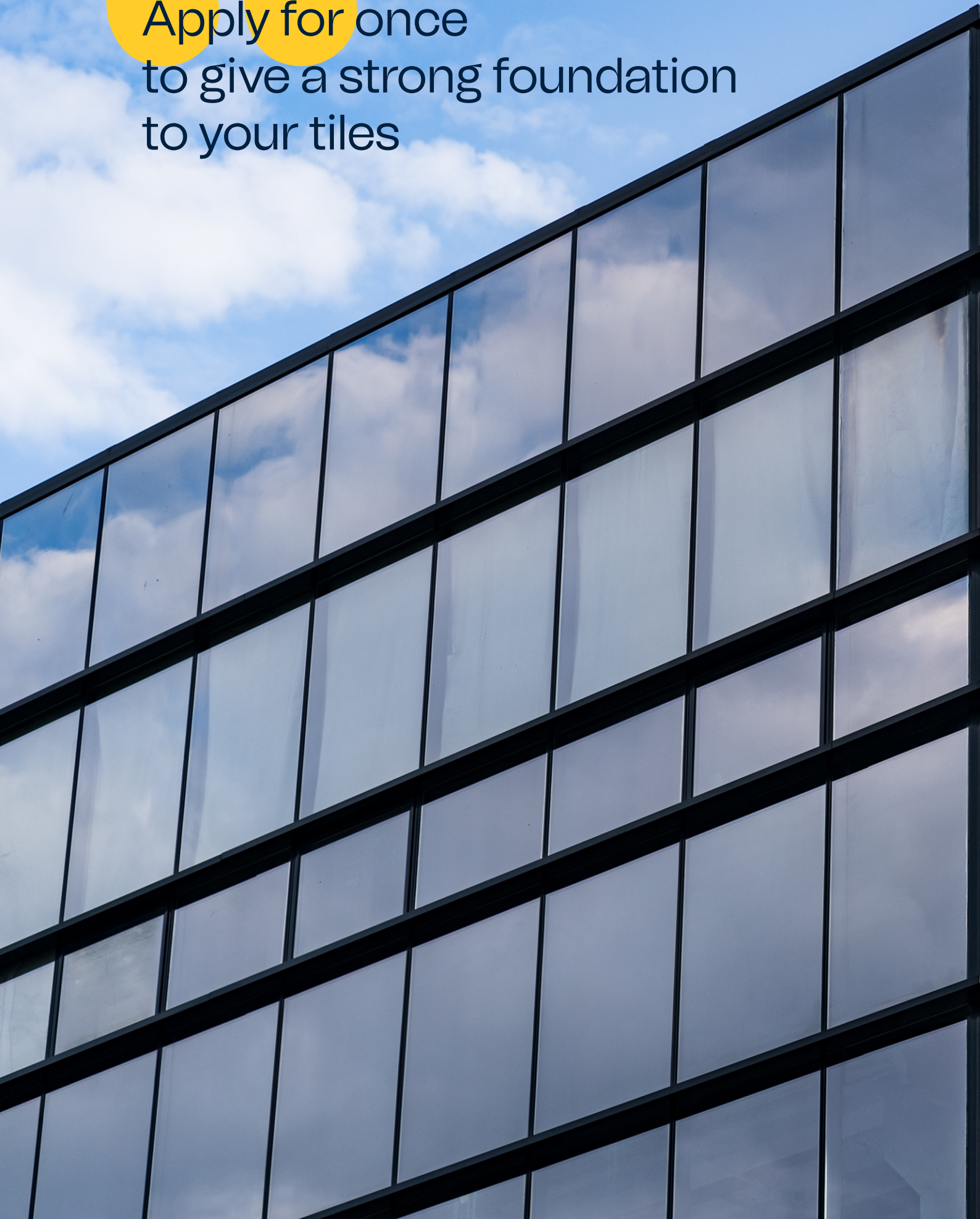


EXCELLENCE

Ensuring customer service excellence our greatest accomplishment is to improve and deliver the best service accorded to our customers



Apply for once
to give a strong foundation
to your tiles





05 06 ARCHITECTURAL DRAWINGS

07 EG 20 CLASSIC

08 EG 30 SUPERIOR

09 EG 40 PREMIUM GREY

10 EG 40 PLUS PREMIUM WHITE

11 EG 50 ELITE GREY

12 EG 50 PLUS ELITE WHITE

13 EG 60 EXCLUSIVE

14 EG PU-222 HEAVY DUTY ADHESIVE

15 AAC BLOCK ADHESIVE

16 EG 10 TILE GROUT

17 EG 10 TILE GROUT ADMIXTURE

18 EG 100 HEAVY DUTY EPOXY GROUT

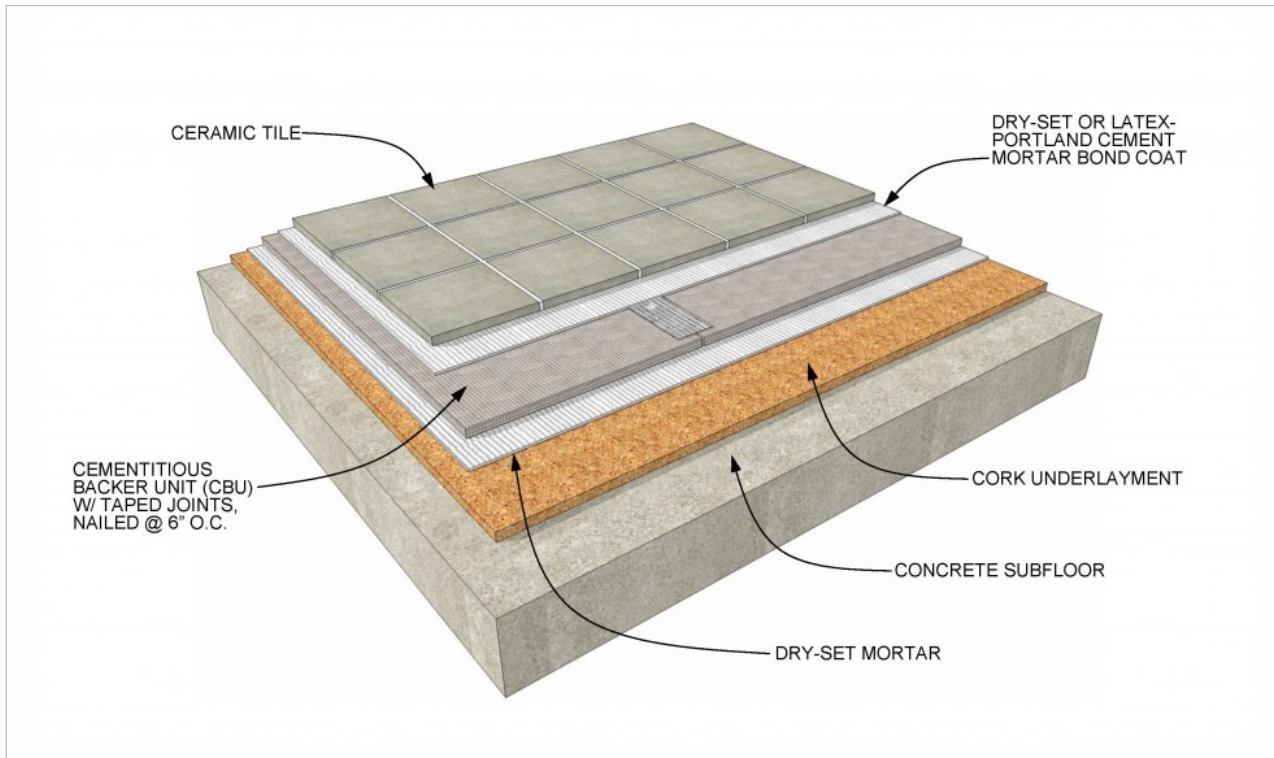
19 STANDARD COLOR SHADES

20 EPOXY GROUT

21 ECOGRIP TILE CLEANER

22 TILE SPACER

Architectural Drawings



Architectural Drawings

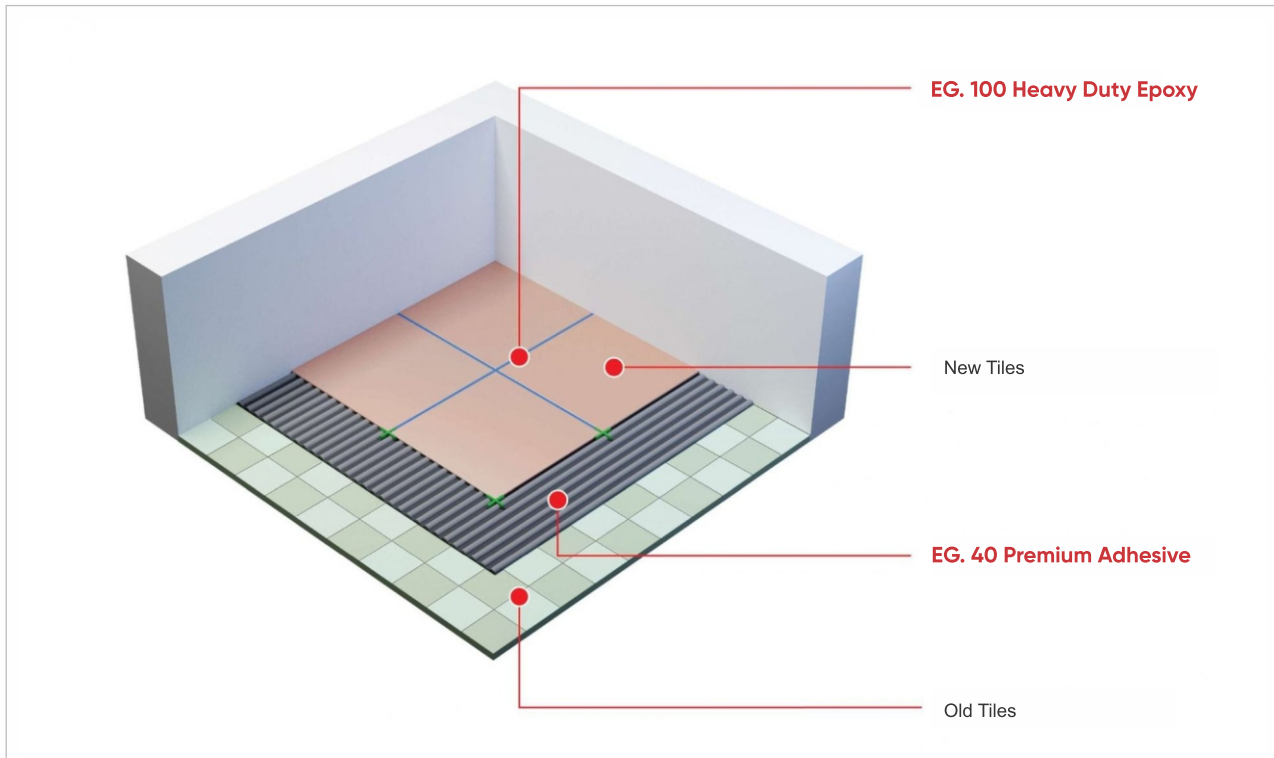


Facade System



Residential

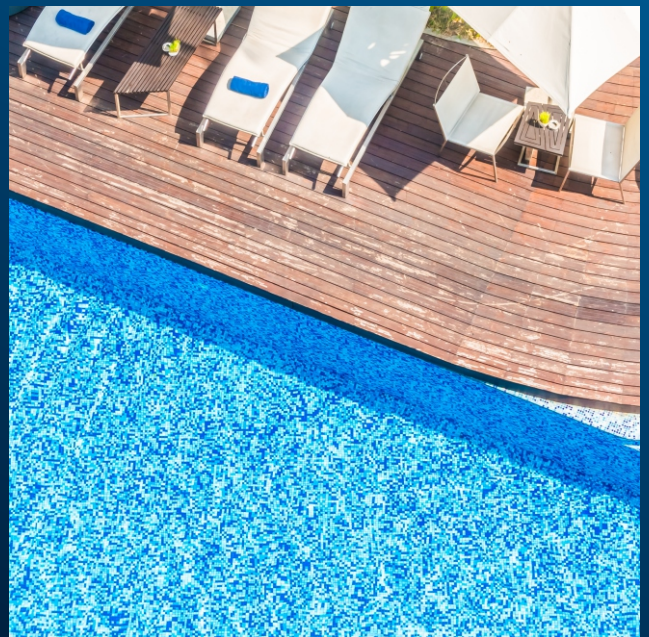
Architectural Drawings



Architectural Drawings for Residential



Tile on Tile System



Swimming Pool

EG 20 CLASSIC

	TYPE 1	
EG-20	Requirement	Typical Values
Property: Test Method		
Tensile Adhesion		
Dry condition- annex- a (clause 5.1)	Minimum 0.50n/mm2	0.55-0.65 n/mm2
Shear Adhesion		
Dry condition- annex- b (clause 5.2)	Minimum 1.00n/mm2	1.05-1.20 n/mm2
Slip Resistance		
Slip Resistance- annex- e (clause 5.5)	≤0.50mm	0.40-0.45mm



EG 20 CLASSIC is a cementitious Polymer based material, suitable for internal areas using the notched trowel method of installation. It can be mixed with water for installing Ceramic & Vitrified tiles on the floor up-to(2*4 ft).& only ceramic tiles on the wall.

Note

Factors like Temperature, Humidity, Wind will affect the Pot Life and Setting Time.

Preparation

The floor which is to be tiled should be pre- cleaned to remove all traces of any coating, oil, dust, grease or other such contaminants.

Pot Life & Coverage

EG 20 Adhesive mixed with water can be used within one hour at an ambient temperature of 30°C and covers approximately 30-40 sq.ft. on smooth and even surface at 3mm thickness.

Method of Application

- The substrate to be tiled must be hard PCC substrate without undulations & levelling.
- The surface to be tiled should be sound and thoroughly cleaned Surface should be free from wax, grease, polish etc.
- Add 3 to 3.5 parts of powder to 1 part of water.
- Mix with a trowel or slow speed drills (50 - 100 rpm) until a lump free homogeneous paste is obtained.
- Always mix the required quantity, which can be consumed.
- Leave mixture for 5 min. before using.
- Spread the adhesive to a thickness of approx. 3-6 mm and comb with a notched trowel.
- Strictly apply the adhesive paste which can be tiled within 10 to 15 minutes.

- Intermittently touch the adhesive paste on substrate by finger. If the adhesive sticks to fingers then continue tiling and if not scrape off the adhesive and apply new coat.
- Start placing the tiles on the surface to be tiled. Tap the tiles properly to ensure complete coverage of the backside of tiles and to eliminate the possibility of any air voids.

Features & Benefits

- Excellent waterproofing characteristics.
- Ready to use, needs no curing.
- Excellent adhesion, low shrinkage.
- Sufficiently flexible to accommodate thermal & physical movements.
- Crack, breakage free firm surface that preserves the tiles for longer period.

Parameters such as temperature, humidity and water addition changes from site to site. The above instructions should be taken only as a general guidelines. Performance of product depends on strict adherence to House Of Tilemate Solutions guidelines. House Of Tilemate Solutions will not be responsible for failure due to improper usage or application. The coverage or yield is given for guidance only and actual field trials are recommended to ascertain the exact coverage or yield.

EG 30 SUPERIOR

Technical Specification

	TYPE 1	CIT
EG-30	Requirement	Typical Values
Property: Test Method		
Tensile Adhesion		
Dry condition- annex- a (clause 5.1)	Minimum 0.50n/mm2	0.55-0.65 n/mm2
Shear Adhesion		
Dry condition- annex- b (clause 5.2)	Minimum 1.00n/mm2	1.05-1.20 n/mm2
Slip Resistance		
Slip Resistance- annex- e (clause 5.5)	≤0.50mm	0.40-0.45mm



EG 30 SUPERIOR is a Factory Made Wall tile adhesive is a smooth and creamy thin-set Adhesive. It is a high polymer modified Adhesive offering vast utility including applications for floor & wall in interior & exterior areas. Using the notched trowel method of installation. It can be used for installing medium tiles up-to (2*4 ft.) on the wall & large format tiles on the floor in both internal and external areas.

Preparation

The floor which is to be tiled should be pre- cleaned to remove all traces of any coating, oil, dust, grease or other such contaminants.

Storage

Keep the material in a cool, dry place since it is a cement based material. EG 30 Adhesive should not be exposed to direct atmospheric conditions. A partially used bag should be stored in airtight conditions.

Storage

EG 30 Adhesive mixed with water can be used within one hour at an ambient temperature of 30°C and covers approximately 30-40 sq.ft. on smooth and even surface at 3mm thickness.

Method of Application

- The substrate to be tiled must be hard PCC substrate without undulations & levelling.
- The surface to be tiled should be sound and thoroughly cleaned. Surface should be free from wax, grease, polish etc.
- Add 3 to 3.5 parts of powder to 1 part of water.
- Mix with a trowel or slow speed drills (50 - 100 rpm) until a lump free homogeneous paste is obtained.
- Leave mixture for 5 min. before using.
- Spread the adhesive to a thickness of approx. 3-6 mm and comb with a notched trowel.
- The prepared paste is to be applied in vertical form on damped tile and in horizontal form on the surface or vice-versa. Using the notched trowel as these create a texture with more grip.
- Strictly apply the adhesive paste which can be tiled within 10 to 15 minutes
- Intermittently touch the adhesive paste on substrate by finger. If the adhesive sticks to fingers then continue tiling and if not scrape off the adhesive and apply new coat.
- Start placing the tiles on the surface to be tiled. Tap the tiles properly to ensure complete coverage of the backside of tiles and to eliminate the possibility of any air voids.
- Fixing of large format tiles requires skilled or trained worker only.

Features & Benefits

- Easy to use - just add water on site, ready to use.
- Ideal product for tile-on-tile applications on floor.
- Sag resistant formula: provides hassle-free application on vertical walls.
- Water resistant - suitable for wet areas.
- Good adhesive bond strength & bonds to various cement-based substrates.

Pot Life & Coverage

EG 30 Adhesive mixed with water can be used within one hour at an ambient temperature of 30°C and covers approximately 30-40 sq.ft. on smooth and even surface at 3mm thickness.

Parameters such as temperature, humidity and water addition changes from site to site. The above instructions should be taken only as a general guidelines. Performance of product depends on strict adherence to House Of Tilemate Solutions guidelines. House Of Tilemate Solutions will not be responsible for failure due to improper usage or application. The coverage or yield is given for guidance only and actual field trials are recommended to ascertain the exact coverage or yield.

EG 40 PREMIUM GREY

Technical Specification

	TYPE 2	C2T
EG-40 Grey	Requirement	Typical Values
Property: Test Method		
Tensile Adhesion		
Dry condition- annex- a (clause 5.1)	minimum 1.50n/mm2	1.7-1.80 n/mm2
wet condition- annex- a (clause 5.1)	minimum 1.00n/mm2	1.50-1.60 n/mm2
Shear Adhesion		
Dry condition- annex- b (clause 5.2)	Minimum 1.25n/mm2	1.25-1.40 n/mm2
heat ageing- annex- b (clause 5.2)	minimum 1.00n/mm2	minimum 1.05-1.15n/mm2
wet condition- annex- b (clause 5.2)	1.00n/mm2	1.10-1.20 n/mm2
Slip Resistance		
annex- a (clause 5.5)	≤0.50mm	0.30-0.45mm



EG 40 PREMIUM GREY is a Factory Made Multipurpose, high polymer modified powder offering vast utility including applications for floor & wall in interior & exterior areas for the Installations of all types of ceramic tile. vitreous. semi-vitreous tile, mosaic tiles and stones over concrete and on a variety of substrates. It has good underwater shear bond that allows this product to be used for wet areas like swimming pools, water bodies and washrooms.

Areas of Application

This adhesive is ideal for tiles with <3% porosity, such as vitrified/fully vitrified tiles, glass mosaic tiles, dense stones, and large (>300mm x 300mm) tiles. It's suitable for vertical and horizontal application, indoors and outdoors, in both dry and wet areas.

Preparation

The floor which is to be tiled should be pre- cleaned to remove all traces of any coating, oil, dust, grease or other such contaminants.

Areas of App		Background Bases	
Walls	V	Concrete	V
Floors	V	Rendering	V
Work Tops	V	Cement : Sand Screed	V
Interior	V	Concrete	V
Exterior	V	Tile Backer Boards	V
Dry Areas	V	Existing Ceramic Tiles	V
Wet Areas	V	Existing Hand Natural Stone	V
Swimming Pools	V	Overlaid Timber Floors	V

Method of Application

- The substrate to be tiled must be hard PCC substrate without undulations & levelling.
- The surface to be tiled should be sound and thoroughly cleaned. Surface should be free from wax, grease, polish etc.
- Add 3 to 3.5 parts of powder to 1 part of water.
- Mix with a trowel or slow speed drills (50 - 100 rpm) until a lump free homogeneous paste is obtained.
- Leave mixture for 5 min. before using.
- Spread the adhesive to a thickness of approx. 3-6 mm and comb with a notched trowel.
- The prepared paste is to be applied in vertical form on damped tile and in horizontal form on the surface or vice-versa. Using the notched trowel as these create a texture with more grip.
- Strictly apply the adhesive paste which can be tiled within 10 to 15 minutes
- Intermittently touch the adhesive paste on substrate by finger. If the adhesive sticks to fingers then continue tiling and if not scrape off the adhesive and apply new coat.
- Start placing the tiles on the surface to be tiled. Tap the tiles properly to ensure complete coverage of the backside of tiles and to eliminate the possibility of any air voids.
- Fixing of large format tiles requires skilled or trained worker only.

Features & Benefits

- High bonding strength.
- Water Resistant & non-porous.
- No extra curing is required.
- Applied even at low thickness of 3 mm, hence it provides more coverage area.
- Bed Thickness can be used upto 8 mm.
- Highly recommended for outer cladding work.
- Premium grade multi-use adhesive.
- Excellent tensile & shear adhesion.

Pot Life & Coverage

EG 40 Adhesive mixed with water can be used within one hour at an ambient temperature of 30°C and covers approximately 30-40 sq.ft. on smooth and even surface at 3mm thickness.

Parameters such as temperature, humidity and water addition changes from site to site. The above instructions should be taken only as a general guidelines. Performance of product depends on strict adherence to House Of Tilemate Solutions guidelines. House Of Tilemate Solutions will not be responsible for failure due to improper usage or application. The coverage or yield is given for guidance only and actual field trials are recommended to ascertain the exact coverage or yield.

EG 40 PLUS PREMIUM WHITE

Technical Specification

	TYPE 2	C2T
EG-40 White	Requirement	Typical Values
Property:		
Test Method		
Tensile Adhesion		
Dry condition- annex- a (clause 5.1)	minimum	1.7-1.80
wet condition- annex- a (clause 5.1)	1.50n/mm2	n/mm2
	minimum	1.50-1.60
	1.00n/mm2	n/mm2
Shear Adhesion		
Dry condition- annex- b (clause 5.2)	Minimum	1.25-1.40
heat ageing- annex- b (clause 5.2)	1.25n/mm2	n/mm2
wet condition- annex- b (clause 5.2)	minimum	minimum
	1.00n/mm2	1.05-1.15n/mm2
	minimum	1.10-1.20
	1.00n/mm2	n/mm2
Slip Resistance		
annex- a (clause 5.5)	≤0.50mm	0.30-0.45mm



EG 40+ PREMIUM WHITE is a Factory Made Multipurpose, high polymer modified powder offering vast utility including applications for floor & wall in interior & exterior areas for the Installations of all types of ceramic tile, vitreous, semi-vitreous tile, mosaic tiles and White stones over concrete and on a variety of substrates. It has good underwater shear bond that allows this product to be used for wet areas like swimming pools, water bodies and washrooms.

Areas of Application

This is suitable for tiles with apparent porosity <3% and best fitted for vitrified/fully vitrified tiles, glass mosaic tiles, white stones, dense, and large dimensions (> 300mm x 300mm) tiles on a variety of surfaces, for both vertical and horizontal application, in dry as well as wet areas for indoor as well as outdoor application.

Preparation

The floor which is to be tiled should be pre-cleaned to remove all traces of any coating, oil, dust, grease or other such contaminants.

Areas of App		Background Bases	
Walls	V	Concrete	V
Floors	V	Rendering	V
Work Tops	V	Cement : Sand Screed	V
Interior	V	Concrete	V
Exterior	V	Tile Backer Boards	V
Dry Areas	V	Existing Ceramic Tiles	V
Wet Areas	V	Existing Hand Natural Stone	V
Swimming Pools	V	Overlaid Timber Floors	V

Method of Application

- The substrate to be tiled must be hard PCC substrate without undulations & levelling.
- The surface to be tiled should be sound and thoroughly cleaned. Surface should be free from wax, grease, polish etc.
- Add 3 to 3.5 parts of powder to 1 part of water.
- Mix with a trowel or slow speed drills (50 - 100 rpm) until a lump free homogeneous paste is obtained.
- Leave mixture for 5 min. before using.
- Spread the adhesive to a thickness of approx. 3-6 mm and comb with a notched trowel.
- The prepared paste is to be applied in vertical form on damped tile and in horizontal form on the surface or vice-versa. Using the notched trowel as these create a texture with more grip.
- Strictly apply the adhesive paste which can be tiled within 10 to 15 minutes
- Intermittently touch the adhesive paste on substrate by finger. If the adhesive sticks to fingers then continue tiling and if not scrape off the adhesive and apply new coat.
- Start placing the tiles on the surface to be tiled. Tap the tiles properly to ensure complete coverage of the backside of tiles and to eliminate the possibility of any air voids.
- Fixing of large format tiles requires skilled or trained worker only.

Features & Benefits

- High bonding strength.
- Water Resistant / non-porous.
- No extra curing is required.
- Applied even at low thickness of 3 mm, hence it provides more coverage area.
- Bed Thickness can be used upto 8 mm.
- Highly recommended for outer cladding work.
- Premium grade multi-use adhesive.
- Excellent tensile & shear adhesion.

Pot Life & Coverage

EG 40+ Premium white Adhesive mixed with water can be used within one hour at an ambient temperature of 30°C and covers approximately 30-40 sq.ft. on smooth and even surface at 3mm thickness.

Note - Factors like Temperature, Humidity, Wind will affect the Pot Life and Setting Time.

Parameters such as temperature, humidity and water addition changes from site to site. The above instructions should be taken only as a general guidelines. Performance of product depends on strict adherence to House Of Tilemate Solutions guidelines. House Of Tilemate Solutions will not be responsible for failure due to improper usage or application. The coverage or yield is given for guidance only and actual field trials are recommended to ascertain the exact coverage or yield.

EG 50 ELITE GREY

Technical Specification

	TYPE 3	C2TE
EG-50 Grey	Requirement	Typical Values
Property:		
Test Method		
Tensile Adhesion		
Dry condition- annex- a (clause 5.1)	minimum	1.5-1.65
wet condition- annex- a (clause 5.1)	1.50n/mm2	n/mm2
	minimum	1.10-1.20
	1.00n/mm2	n/mm2
Shear Adhesion		
Dry condition- annex- b (clause 5.2)	Minimum	1.60-1.70
heat ageing- annex- b (clause 5.2)	1.50n/mm2	n/mm2
	minimum	minimum
wet condition- annex- b (clause 5.2)	1.00n/mm2	1.10-1.20n/mm2
	minimum	1.15-1.25
	1.00n/mm2	n/mm2
Slip Resistance		
annex- e (clause 5.5)	≤0.50mm	0.40-0.45mm



EG 50 ELITE GREY is a versatile, high-polymer modified powder for installing large format tiles on most substrates. It's suitable for interior and exterior floor and wall installations of ceramic tile, natural stone, granite, and Italian tiles over concrete and various substrates. With superior bond strength, flexibility, and resistance to shock and impact, it's ideal for demanding areas like external facades, industrial floors, and high-traffic zones.

Areas of Application

EG 50 adhesive for exterior walls: Ideal for ceramic, clay, basalt, glass mosaic, porcelain tiles, and natural stones on plaster or concrete. Mixes easily with water, offers high adhesion, and workability.

Preparation

The floor which is to be tiled should be pre-cleaned to remove all traces of any coating, oil, dust, grease or other such contaminants.

Areas of App		Background Bases	
Walls	V	Concrete	V
Floors	V	Rendering	V
Work Tops	V	Cement : Sand Screed	V
Interior	V	Concrete	V
Exterior	V	Tile Backer Boards	V
Dry Areas	V	Existing Ceramic Tiles	V
Wet Areas	V	Existing Hand Natural Stone	V
Swimming Pools	V	Overlaid Timber Floors	V

Method of Application

- The substrate to be tiled must be hard PCC substrate without undulations & levelling.
- The surface to be tiled should be sound and thoroughly cleaned. Surface should be free from wax, grease, polish etc.
- Add 3 to 3.5 parts of powder to 1 part of water.
- Mix with a trowel or slow speed drills (50 - 100 rpm) until a lump free homogeneous paste is obtained.
- Leave mixture for 5 min. before using.
- Spread the adhesive to a thickness of approx. 3-6 mm and comb with a notched trowel.
- The prepared paste is to be applied in vertical form on damped tile and in horizontal form on the surface or vice-versa. Using the notched trowel as these create a texture with more grip.
- Strictly apply the adhesive paste which can be tiled within 10 to 15 minutes
- Intermittently touch the adhesive paste on substrate by finger. If the adhesive sticks to fingers then continue tiling and if not scrape off the adhesive and apply new coat.
- Start placing the tiles on the surface to be tiled. Tap the tiles properly to ensure complete coverage of the backside of tiles and to eliminate the possibility of any air voids.
- Fixing of large format tiles and Stones requires skilled or trained worker only.

Features & Benefits

- High bonding strength.
- Water Resistant & non-porous.
- No extra curing is required.
- Applied even at low thickness of 3 mm, hence it provides more coverage area.
- Bed Thickness can be used upto 8 mm.
- Highly recommended for outer cladding work.
- Premium grade multi-use adhesive.
- Excellent tensile & shear adhesion.
- Flexible and shock & impact resistant.

Pot Life & Coverage

EG 50 Adhesive mixed with water can be used within one hour at an ambient temperature of 30°C and covers approximately 30-40 sq.ft. on smooth and even surface at 3mm thickness.

Parameters such as temperature, humidity and water addition changes from site to site. The above instructions should be taken only as a general guidelines. Performance of product depends on strict adherence to House Of Tilemate Solutions guidelines. House Of Tilemate Solutions will not be responsible for failure due to improper usage or application. The coverage or yield is given for guidance only and actual field trials are recommended to ascertain the exact coverage or yield.

EG 50 PLUS ELITE WHITE

Technical Specification

	TYPE 3	C2TE
EG-50 WHITE	Requirement	Typical Values
Property:		
Test Method		
Tensile Adhesion		
Dry condition- annex- a (clause 5.1)	minimum 1.50n/mm2	1.5-1.65 n/mm2
wet condition- annex- a (clause 5.1)	minimum 1.00n/mm2	1.10-1.20 n/mm2
Shear Adhesion		
Dry condition- annex- b (clause 5.2)	Minimum 1.50n/mm2	1.60-1.70 n/mm2
heat ageing- annex- b (clause 5.2)	minimum 1.00n/mm2	minimum 1.10-1.20n/mm2
wet condition- annex- b (clause 5.2)	minimum 1.00n/mm2	1.15-1.25 n/mm2
Slip Resistance		
annex- e (clause 5.5)	≤0.50mm	0.40-0.45mm

EG 50 PLUS ELITE WHITE is a Factory Made Multipurpose, high polymer modified powder for installation of large format tiles on most of the substrates. It can be used for interior and exterior floor and wall installations of all types of ceramic tile, vitreous, semi-vitreous tile, White natural stone, granite and Italian over concrete and on a variety of substrates. It has superior bond strength & flexibility and is also highly resistant to shock & impact. These features make it a premium choice for Cladding and installation of tile & stone in highly demanding areas such as external facades, industrial floors, high traffic areas etc.

Areas of Application

EG 50+ ELITE WHITE adhesive is suitable mainly for tiles and White stone tiles on exterior wall substrates like plaster or concrete. It is suitable for tiles like ceramic, clay tiles, basalt tiles vitrified, glass mosaic tiles and porcelain tiles and all-natural stones. EG 50+ ELITE White is Specially designed to mix with water, has a convenient open time with high adhesion and work ability.

Preparation

The floor which is to be tiled should be pre- cleaned to remove all traces of any coating, oil, dust, grease or other such contaminants.

Method of Application

- The substrate to be tiled must be hard PCC substrate without undulations & levelling.
- The surface to be tiled should be sound and thoroughly cleaned. Surface should be free from wax, grease, polish etc.
- Add 3 to 3.5 parts of powder to 1 part of water.
- Mix with a trowel or slow speed drills (50 - 100 rpm) until a lump free homogeneous paste is obtained.
- Leave mixture for 5 min. before using.
- Spread the adhesive to a thickness of approx. 3-6 mm and comb with a notched trowel.
- The prepared paste is to be applied in vertical form on damped tile and in horizontal form on the surface or vice-versa. Using the notched trowel as these create a texture with more grip.
- Strictly apply the adhesive paste which can be tiled within 10 to 15 minutes
- Intermittently touch the adhesive paste on substrate by finger. If the adhesive sticks to fingers then continue tiling and if not scrape off the adhesive and apply new coat.
- Start placing the tiles on the surface to be tiled. Tap the tiles properly to ensure complete coverage of the backside of tiles and to eliminate the possibility of any air voids.
- Fixing of large format tiles and Stones requires skilled or trained worker only.



Areas of App		Background Bases	
Walls	V	Concrete	V
Floors	V	Rendering	V
Work Tops	V	Cement : Sand Screed	V
Interior	V	Concrete	V
Exterior	V	Tile Backer Boards	V
Dry Areas	V	Existing Ceramic Tiles	V
Wet Areas	V	Existing Hand Natural Stone	V
Swimming Pools	V	Overlaid Timber Floors	V

Features & Benefits

- High bonding strength.
- Water Resistant & non-porous.
- No extra curing is required.
- Applied even at low thickness of 3 mm, hence it provides more coverage area.
- Bed Thickness can be used upto 8 mm.
- Highly recommended for outer cladding work.
- Premium grade multi-use adhesive.
- Excellent tensile & shear adhesion.
- Flexible and shock & impact resistant.

Pot Life & Coverage

EG 50+ ELITE White Adhesive mixed with water can be used within one hour at an ambient temperature of 30°C and covers approximately 30-40 sq.ft. on smooth and even surface at 3mm thickness.

Note - Factors like Temperature, Humidity, Wind will affect the Pot Life and Setting Time.

Parameters such as temperature, humidity and water addition changes from site to site. The above instructions should be taken only as a general guidelines. Performance of product depends on strict adherence to House Of Tilemate Solutions guidelines. House Of Tilemate Solutions will not be responsible for failure due to improper usage or application. The coverage or yield is given for guidance only and actual field trials are recommended to ascertain the exact coverage or yield.

EG 60 EXCLUSIVE

Technical Specification

	TYPE 4	C2TE S1
EG-60	Requirement	Typical Values
Property: Test Method		
Tensile Adhesion		
Dry condition- annex- a (clause 5.1)	minimum 1.50n/mm2	1.7-1.80 n/mm2
wet condition- annex- a (clause 5.1)	minimum 1.00n/mm2	1.50-1.60 n/mm2
Shear Adhesion		
Dry condition- annex- b (clause 5.2)	Minimum 1.50n/mm2	1.80-1.90 n/mm2
heat ageing- annex- b (clause 5.2)	minimum 1.00n/mm2	minimum 1.20-1.30n/mm2
wet condition- annex- b (clause 5.2)	minimum 1.00n/mm2	1.30-1.40 n/mm2
Slip Resistance		
annex- e (clause 5.5)	≤0.50mm	0.35-0.45mm
Transverse Deformation		
(clause 5.6)	≤0.25mm ≤5.00mm	2.55-2.65mm



EG 60 is a Factory Made Multipurpose, high polymer modified powder for installation of large format stones on most of the substrates. It can be used for interior and exterior floor and wall installations of all types of ceramic tile, vitreous, semi-vitreous tile, natural stone, granite and Italian over concrete and on a variety of substrates. It has superior bond strength, highly deform ability & flexibility and is also highly resistant to shock & impact. These features make it a premium choice for Cladding and installation of tile & stone in highly demanding areas such as external facades, heating areas, industrial floors, high traffic areas etc.

Areas of Application

EG 60 adhesive for exterior walls: Ideal for cladding and laying heavy, large format tiles and stones like ceramic, clay, basalt, glass mosaic, full-body tiles, and natural stones. Offers excellent handling properties with good sag and slump resistance. Applies up to 15 mm bed thickness.

Preparation

The floor which is to be tiled should be pre-cleaned to remove all traces of any coating, oil, dust, grease or other such contaminants.

Areas of App		Background Bases	
Walls	V	Concrete	V
Floors	V	Rendering	V
Work Tops	V	Cement : Sand Screed	V
Interior	V	Concrete	V
Exterior	V	Tile Backer Boards	V
Dry Areas	V	Existing Ceramic Tiles	V
Wet Areas	V	Existing Hand Natural Stone	V
Swimming Pools	V	Overlaid Timber Floors	V

Method of Application

- The substrate to be tiled must be hard PCC substrate without undulations & levelling.
- The surface to be tiled should be sound and thoroughly cleaned. Surface should be free from wax, grease, polish etc.
- Add 3 to 3.5 parts of powder to 1 part of water.
- Mix with a trowel or slow speed drills (50 - 100 rpm) until a lump free homogeneous paste is obtained.
- Leave mixture for 5 min. before using.
- Spread the adhesive to a thickness of approx. 3-6 mm and comb with a notched trowel.
- The prepared paste is to be applied in vertical form on damped tile and in horizontal form on the surface or vice-versa. Using the notched trowel as these create a texture with more grip.
- Strictly apply the adhesive paste which can be tiled within 10 to 15 minutes
- Intermittently touch the adhesive paste on substrate by finger. If the adhesive sticks to fingers then continue tiling and if not scrape off the adhesive and apply new coat.
- Start placing the tiles on the surface to be tiled. Tap the tiles properly to ensure complete coverage of the backside of tiles and to eliminate the possibility of any air voids.
- Fixing of large format tiles and Stones requires skilled or trained worker only.

Features & Benefits

- High bonding strength.
- Water Resistant & non-porous.
- No extra curing is required.
- Applied even at low thickness of 3 mm, hence it provides more coverage area.
- Bed Thickness can be used upto 8 mm.
- Highly recommended for outer cladding work.
- Premium grade multi-use adhesive.
- Excellent tensile & shear adhesion.
- Flexible and shock & impact resistant.

Pot Life & Coverage

EG 60 Adhesive mixed with water can be used within one hour at an ambient temperature of 30°C and covers approximately 30-40 sq.ft. on smooth and even surface at 3mm thickness.

Parameters such as temperature, humidity and water addition changes from site to site. The above instructions should be taken only as a general guidelines. Performance of product depends on strict adherence to House Of Tilemate Solutions guidelines. House Of Tilemate Solutions will not be responsible for failure due to improper usage or application. The coverage or yield is given for guidance only and actual field trials are recommended to ascertain the exact coverage or yield.

EG PU-222 HEAVY DUTY ADHESIVE

EG PU- 222 is a Factory made multipurpose Polyurethane (PU) adhesive is a versatile and high-performance bonding solution widely used in various surfaces due to its exceptional bonding strength, flexibility, and chemical resistance. As a key player in modern adhesive technologies, PU adhesive has revolutionized the way materials are joined, enabling innovation and efficiency across numerous applications.

A) Preparation

The floor which is to be tiled should be pre- cleaned to remove all traces of any coating, oil, dust, grease or other such contaminants.

Areas of Application

EG-222 PU a two component, modified Polyurethane Adhesive designed for the installation of ceramic tile, vitrified tile, metal tile, glass tile, agglomerates, glass mosaic tile and natural stone on any substrate. It is highly elastic, thixotropic and suitable to lay water sensitive tiles & stones on highly expandable, deformable, absorbent and non-absorbent substrates.

B) Method of Application

Apply PU-222 adhesive to the substrate with the flat side of the trowel, pressing firmly to work into surface. Comb on additional adhesive with the notched side. Use the proper sized notched trowel to ensure full bedding of the tile. Spread as much adhesive as can be covered with tile in 10 minutes. Back butter large format tiles (> 12"x12") to provide full bedding and firm support. Place tiles into wet, sticky adhesive and beat in using a beating block and rubber mallet to imbed tile and adjust level. Check adhesive for complete coverage by periodically removing a tile and inspecting bedding adhesive transfer onto back of tile. If adhesive is skinned over (not sticky), remove and replace with fresh adhesive.



Features & Benefits

- This is a two-component product that is easy to use. You can just mix and use it on-site.
- It has water, temperature, and shock-resistant properties that make it suitable for use in diverse external conditions.
- It can be used on large format tile applications as it has a long open time.
- It is fit for use on high vibrational areas as it is a highly flexible adhesive.
- Being chemical resistant, this adhesive is an excellent choice for fixing various types of materials such as metal, plywood, and engineered stones in commercial and domestic applications.
- It is a low-VOC product which means it is not harmful to the environment.

STORAGE:

Keep the material in a cool, dry place.

EG PU-222 Heavy Duty Adhesive should not be exposed to direct atmospheric conditions.

SHELF LIFE:

12 months from the date of manufacture.

Parameters such as temperature, humidity and water addition changes from site to site. The above instructions should be taken only as a general guidelines. Performance of product depends on strict adherence to House Of Tilemate Solutions guidelines. House Of Tilemate Solutions will not be responsible for failure due to improper usage or application. The coverage or yield is given for guidance only and actual field trials are recommended to ascertain the exact coverage or yield.

ECOGRIP AAC BLOCK ADHESIVE

AAC Block adhesive typically consists of a blend of synthetic polymers, resins, and fillers. These components are carefully formulated to provide strong adhesion and excellent durability under different environmental conditions. Designed for use with water to produce high strength thixotropic mortar, for laying aerated light weight concrete, fly ash bricks, cement hollow blocks, cellular concrete blocks or smoothing over the block work surface in layers of upto 12mm thickness.

- The surface of application must be properly cleaned for loose particles, dust, dirt, oil, and grease.
- The base on which the adhesive is applied must be cured.
- The surface defects such as cracks, holes or voids should be repaired prior to application.

Application

- The mixing of adhesive must be done properly and thoroughly with water.
- The ratio of adhesive and water is approximately 25-30% of the weight of the adhesive.
- Apply a thin layer of mixed adhesive on the AAC blocks in the thickness of 3 to 5mm by using a proper trowel on which the block work is to be carried out.
- After placing the first block apply the AAC Block Adhesive of the same thickness on both the sides of the block continuously keeping a check on the line and level.

The excess adhesive coming out of the block is cleaned immediately and the procedure is carried out for entire blockwork.



SUITABLE SUBSTRATES

Concrete blocks | Cement mortar blocks/bricks | Concrete hollow blocks
Aerated light weight blocks | Cellular concrete blocks | Fly ash bricks



EG 10 TILE GROUT

Technical Specification

ISO/EN DATA		
Property Test Method	Requirement	Typical Values
Abrasion resistance: ISO 13007-4; Clause 4.4; En 12808-2	$\leq 2000\text{mm}^2$	Typical Values
Flexural strength under standard condition: ISO 13007-4; Clause 4.1.3; EN 128083	$\geq 2.5\text{N/mm}^2$	1300-1600/mm ²
Compressive Strength under standard Condition: ISO 13007-4; Clause	$\geq 15\text{N/mm}^2$	3.0-3.5N/mm ²
Shrinkage: ISO 13007-4; Clause 4.3; EN 12808-4	$< 3\text{mm/m}$	820-22N/mm ²
Water Absorption after 30 Minutes: ISO 13007-4; Clause 4.2; EN 12808-5	$\leq 5.0\text{g}$	2.5-3.0g



EG 10 Tile Grout is the finest cementitious polymer based powder, Tile grout is a material used to fill the gaps between tiles and provide stability, support, and a finished look to tiled surfaces. It is powder from material which requires only addition of water before use.

A) Preparation

Prior to application, the tile surface must be thoroughly cleaned and prepared to ensure proper adhesion. It is crucial to eliminate any dust, debris, or residues that may compromise the bonding capacity of the Tile grout.

Tile Grout Filler Powder should be used for filling any type tile joints only after 24 hours of fixing the tiles. Mix Tile Grout with water in the ratio of three part powder and one part water by volume. Let the mixed paste of Tile Grout remain the pan for 10-15 minutes. Apply the paste to fill Joints with a sponge/ squeegee. Remove surplus paste of Tile Grout with a damp sponge before it dries. Allow the tile grout to naturally cure complete dry for 24 hours after application.

B) Mixing

The preparation of tile grout involves mixing the grout powder with water to achieve a smooth, workable consistency.

Areas of App		Background Bases	
Walls	V	Concrete	V
Floors	V	Rendering	V
Work Tops	V	Cement : Sand Screed	V
Interior	V	Concrete	V
Exterior	V	Tile Backer Boards	V
Dry Areas	V	Existing Ceramic Tiles	V
Wet Areas	V	Exciting Hand Natural Stone	V
Swimming Pools	V	Overlaid Timber Floors	V

Packing:

1Kg, 5Kg & 10 kg bucket

Shelf Life:

12 months from the date of manufacture.



Parameters such as temperature, humidity and water addition changes from site to site. The above instructions should be taken only as a general guidelines. Performance of product depends on strict adherence to House Of Tilemate Solutions guidelines. House Of Tilemate Solutions will not be responsible for failure due to improper usage or application. The coverage or yield is given for guidance only and actual field trails are recommended to ascertain the exact coverage or yield.

EG 10 TILE GROUT ADMIXTURE

Tile Grout admixture is an additive that can be mixed with traditional tile grout to enhance its properties or provide specific benefits. These admixtures are designed to improve the performance of the grout in various ways, such as increasing flexibility, durability, and resistance to stains and water. It is a white colored liquid which creates an invisible shield to repel dirt so that it won't penetrate the grout.

A) Preparation

Remove any large debris such as grease. Dirt and other contaminants before coating, sweep with broom or brush. If extremely dirty, clean with tile cleaner. Rinse with clean water, and allow the surface to dry completely before applying.

B) Mixing

The preparation of tile Grout Admixture involves mixing the grout powder with Grout Admixture to enhance the grout property and achieve a smooth and workable consistency.



APPLICATION

Floor must be completely dry to touch before application. Do not dilute. Product may be applied with saturated brush, roller or micro cloth. After seal remains on surface for no more than 10 minutes, mop or wipe the surface. Highly porous surfaces will require two coats. Apply the second when the first coat when the first coat is dry (after 20-30 minutes). Wait at least 4 hours before opening to light traffic for the best protection.



Precaution

For better result add 400ml of admixture to 1Kg grout and do not over mix the material.

Packing:

Available in Sizes of 200ml And 500ml Bottle Packaging.

Shelf Life:

12 months from the date of manufacture.

Features & Benefits

- Polymer Additive.
- Strain Resistance Additive.
- Water Repellent Additive.
- Mold and Mildew Inhibitors.
- Color Enhancers.
- Fast Setting Additives.

Storage:

Store in Dry and Cool place, Stay away from direct sunlight.

Parameters such as temperature, humidity and water addition changes from site to site. The above instructions should be taken only as a general guidelines. Performance of product depends on strict adherence to House Of Tilemate Solutions guidelines. House Of Tilemate Solutions will not be responsible for failure due to improper usage or application. The coverage or yield is given for guidance only and actual field trails are recommended to ascertain the exact coverage or yield.

EG 100 HEAVY DUTY EPOXY GROUT

Technical Specification

	ISO/EN DATA	
Property Test Method	Requirement	Typical Values
Abrasion resistance: ISO 13007-4: Clause 4.4; EN 12808-2	$\leq 250 \text{ mm}^2$	Pass
Flexural strength under standard condition: ISO 13007-4: Clause 4.1.3; EN 12808-3	$\geq 30 \text{ N/mm}^2$	38-40 N/mm ²
Compressive Strength under standard Condition: ISO 13007-4: EN 12808-4	$\geq 45 \text{ N/mm}^2$	55-57 N/mm ²
Shrinkage: ISO 13007-4: Clause 4.3; EN 12808-4	$< 1.5 \text{ mm/m}$	0.6-0.8 mm/m
Water Absorption after 240 Minutes: ISO 13007-4; Clause 4.2; EN 12808-5	$\leq 0.1 \text{ g}$	0.015 - 0.040g



EG 100 Epoxy grout is a three part component general purpose water clean-up epoxy system for grouting most types of ceramic tiles in demanding environments. Epoxy-based formulations exhibit superior bonding capabilities, creating a robust connection between tiles. This attribute not only ensures a long-lasting installation but also contributes to the structural integrity of the tiled surface, EG 100 Epoxy-based formulations exhibit superior bonding capabilities, creating a robust connection between tiles. This attribute not only ensures a long-lasting installation but also contributes to the structural integrity of the tiled surface making it particularly advantageous in high-traffic areas. This makes it waterproof and almost completely resistant to stains.

A) Preparation

Prior to application, the tile surface must be thoroughly cleaned and prepared to ensure optimal adhesion. It is crucial to eliminate any dust, debris, or residues that may compromise the bonding capacity of the epoxy grout.

Mixing

Epoxy is a three component system for onsite mixing. Initially add the epoxy resin to the epoxy hardener to a clean container and mix thoroughly. To this mix while stirring gradually. Add the powder color grout and mix this until lump free uniform color is achieved.

B) APPLICATION

Using a rubber squeegee, press the grout firmly into the joints. Ensuring that the joints are completely filled. Remove excess grout from the surface of the tiles with the rubber squeegee using a diagonal motion. Clean off the surplus grout from the joints and surface within 10-15 minutes. Use the damp sponge in a circular motion and keep it relative to the surface to achieve the flush joint. Do not allow water to flow or run into ungrouped joints.

Features & Benefits

- High bonding strength.
- Water Resistant | non-porous.
- Flexible, Highly deformable and Shock resistance.
- Ideal for both interior and exterior application.
- High strength.
- Chemical resistant.
- Good abrasion resistant.
- Good heating Resistant.

STORAGE:

Store unopened in normal & dry condition.

Precautions:

- Do not add water into the Epoxy.
- Do not apply on wet/damp tile joints.
- Do not over-mix the material.
- Ensure adequate ventilation during application in working place.
- Do not apply Epoxy at temperature above 50°C.
- Do not allow the residue to remain on the surface more than 24hrs.
- Keep out reach of children conditions.

SHELF LIFE:

12 months from the date of manufacture.

Parameters such as temperature, humidity and water addition changes from site to site. The above instructions should be taken only as a general guidelines. Performance of product depends on strict adherence to House Of Tilemate Solutions guidelines. House Of Tilemate Solutions will not be responsible for failure due to improper usage or application. The coverage or yield is given for guidance only and actual field trials are recommended to ascertain the exact coverage or yield.

STANDARD COLOR SHADES

T I L E G R O U T

	PEARL WHITE		DARK GREY
	WINE		RAVEN
	IVORY		LEMON
	ALMOND		SADDLE
	VINTAGE		CANYON RED
	LIGHT BEIGE		SABLE
	PALE ROSE		HEMP
	PARETIC		CREEPER
	MANIAC		PINK BLUSH
	MOCHA		CARAMEL
	SANDSTONE		OLON GREEN
	BEIGE		AQUA BLUE
	MIDNIGHT BLACK		BLUE DARK
	SKY BLUE		MERRY PINK

Note: While every care is taken during printing of this brochure exact matching of the colors/ shades cannot be guaranteed. Shades shown are for indication only.

EPOXY GROUT

S P E C I A L C O L O U R

EPOXY GROUT MIX SPARKLES COLORS



DARK IVORY



DARK BLUE



BURGANDY



TERRA COTTA



BROWN



DARK CHOCOLATE



DARK GREY



MID NIGHT BLACK



GOLDEN SPARKLE



SILVER SPARKLE



COPPER SPARKLE

Note : All 34 Shades of epoxy Grout are available in Mix Sparkle

EPOXY GROUT PURE SPARKLES COLORS



GOLDEN SPARKLE



SILVER SPARKLE



COPPER SPARKLE

ECOGRIP TILE CLEANER

EG 150

EG 150 Tile cleaner is a cleaning solution specifically designed for cleaning and maintaining various types of Tile surfaces. It is formulated to effectively remove dirt, grime, stains, soap scum, and other contaminants that can accumulate on tiles. It removes cement & paint particles from the surface.

USES:

Use for cleaning of dirty ceramic tiles. Vitrified tiles & Granite

APPLICATION

Firstly clear the tiled surface of any loose debris or items that may interfere with the cleaning process. Sweep or vacuum the area if necessary. Then the tile cleaner may need to be diluted with water and then pour or spray the tile cleaner onto the tiled surface. Ensure even coverage, especially in areas with stains, grime, or discoloration. Use a trigger spray bottle or a mop and Allow for contact with the area for approx... 7-9 minutes. Thoroughly brush in area treated with the solution, wipe away or rinse off the tile cleaner with water and heavily solid area may require repeated application of Tile cleaner.

PRECAUTION

Do Not Apply on White Marble and Italian Surfaces Causes Strains or Do not pour Tile cleaner into metal containers, Result can be Dangerous.



Features & Benefits

Easy to apply.

- It kills germs and removes tough stains from the surface.
- It is safe and environment friendly product.

PACKING:

Available in Sizes of 5 litres and a combo pack of 10 nos in 1 Litre of packaging.

SHELF LIFE:

Tile cleaner has a shelf life of 12 months in an unopened container from the date of manufacture.

STORAGE:

Store in Dry and Cool place, Stay away from direct sunlight.



Parameters such as temperature, humidity and water addition changes from site to site. The above instructions should be taken only as a general guidelines. Performance of product depends on strict adherence to House of Tilemate Solutions guidelines. House of Tilemate Solutions will not be responsible for failure due to improper usage or application. The coverage or yield is given for guidance only and actual field trails are recommended to ascertain the exact coverage or yield.

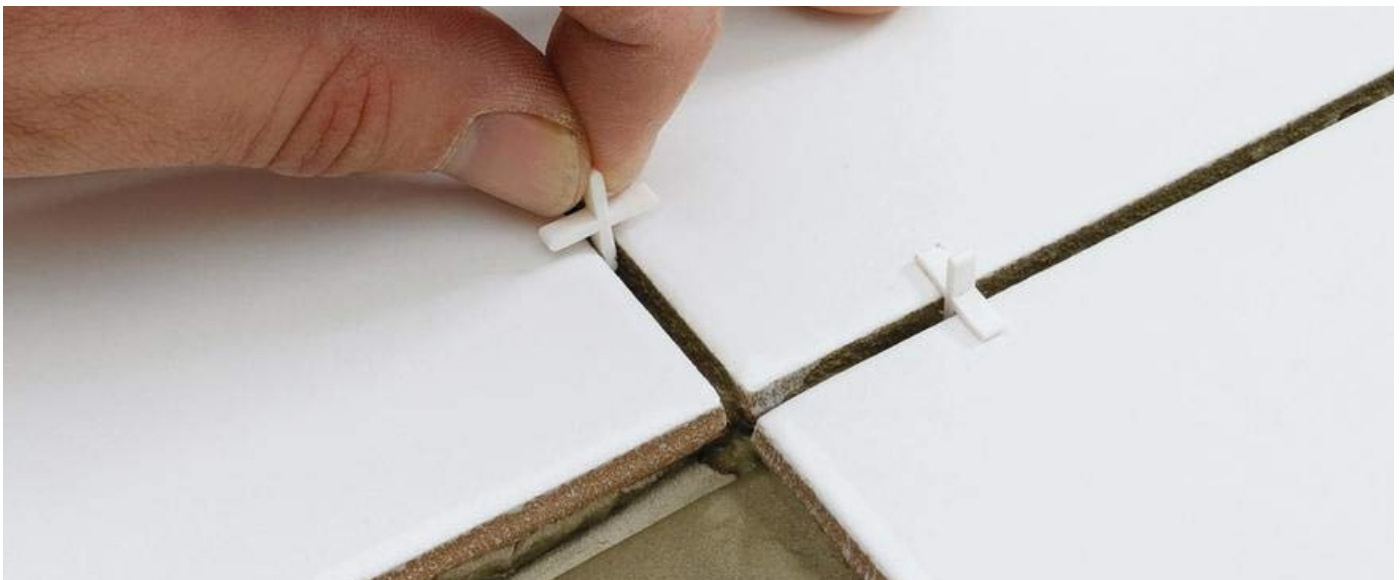
TILE SPACER


Why use Accurate tile spacers?

Accurate Tile spacers can aid in giving your job a accurate professional finish (as well as providing a variety of style/design options for your customer) and come in a range of shape and sizes. Accurate tile spacers allow you to achieve a consistent pattern when fixing wall/floor tiles and help to ensure that all tiles are laid equidistant from each other (providing a symmetrical finish - as you or your customer would expect) in order for the grout to then be applied.

How many sizes are available in Accurate tile spacers?

- ✓ 2mm tile spacer
- ✓ 3mm tile spacer
- ✓ 4mm tile spacer
- ✓ 5mm tile spacer
- ✓ 6mm tile spacer
- ✓ 8mm tile spacer





Apply for once to give a strong
foundation to your tiles

Head Office:

House Of Tilemate Solutions

(An ISO 9001:2015 Certified Company)

G-8 Rafel Tower, Saket Square, Palasia,
Indore-452001 (M.P.)

For More Information

Visit Our Website : www.ecogrip.in

For Feedback/Complaints,

 ecogrip@gmail.com

 +91 626-574-8244



Product of
Bharat

